

Exercise code: DrE-3
 Exercise type: Individual
 Exercise title: Orthographic projections and sectioning

Exercise Assignment:

Use A3 paper with standard border. Divide the drawing space with the vertical line into two equally wide spaces and:

- 1) From Figure 1 draw in scale 1:1 the view in the direction of arrow X and the offset section on section plane A-A.
- 2) From Figure 2 draw in scale 1:2 section views on section planes A-A and B-B one underneath the other

Exercise tips:

Always read exercise assignment carefully.

This exercise requires using scales – **NOT FREEHAND**. Arrange drawings neatly and ensure all letters and lines are made according to BS8888.

Submit the exercise solution in A3 to U/G Mechanical & Aeronautical office, C108, in week 6 (check the deadline on web). Ensure that name, group and other relevant data are filled in the title block

Figure 1.

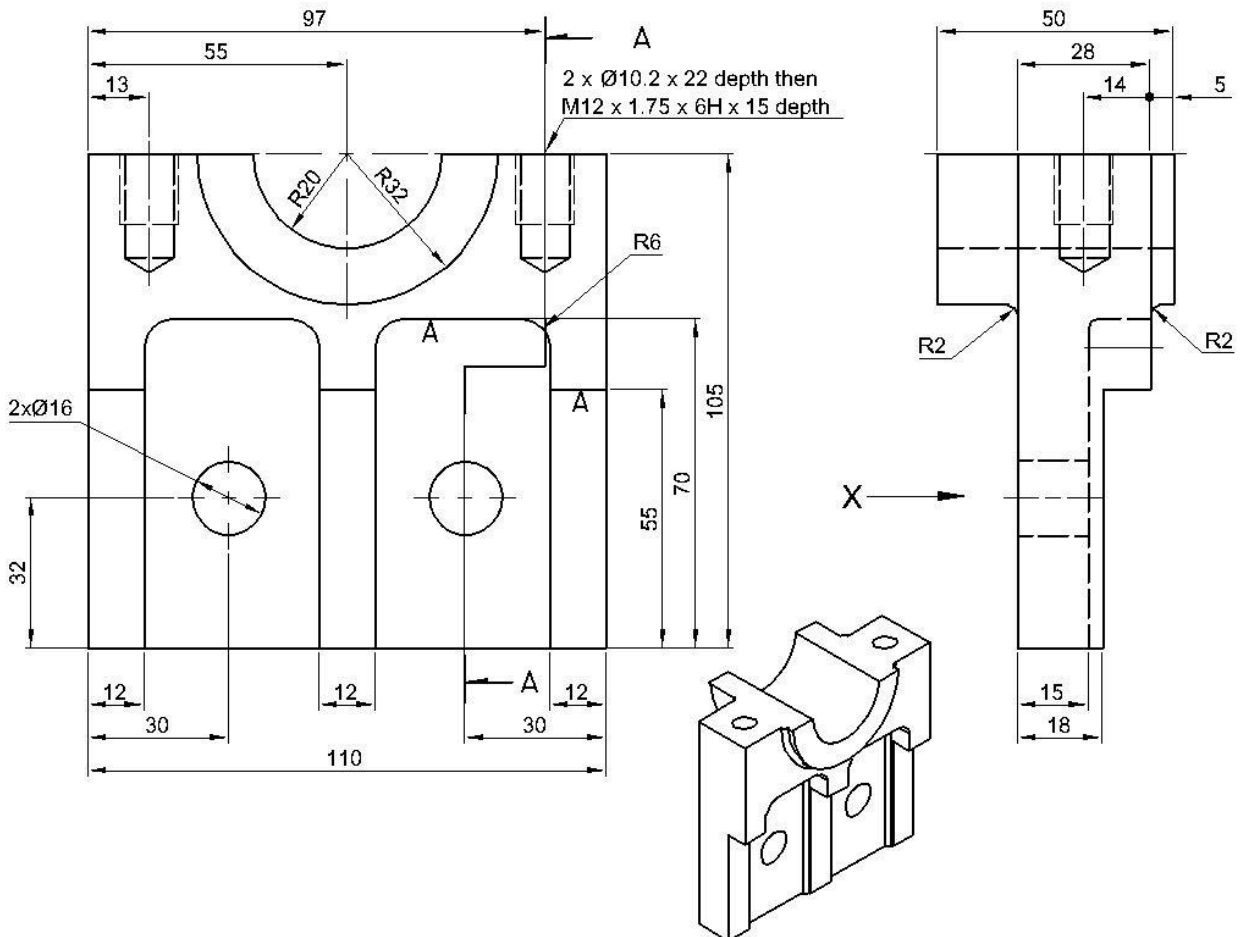


Figure 2.

