



COMMISSION ON THE LIMITS
OF THE CONTINENTAL SHELF

Distr.
GENERAL

CLCS/11/Add.1/Corr.1
19 November 1999

ENGLISH ONLY

Sixth session
New York, 30 August-3 September 1999

SCIENTIFIC AND TECHNICAL GUIDELINES OF THE COMMISSION
ON THE LIMITS OF THE CONTINENTAL SHELF

Annexes II-IV to the Guidelines adopted by the Commission
on 3 September 1999 at its sixth session

Corrigendum

Annex II

1. Page 3, para. 2, II. Determination of the foot of the continental slope:

Subparagraph (a) should read

- (a) Maximum change in the gradient at the base of the continental slope
(article 76 (4));

2. Page 5, figure II.1

Page 6, figure II.2

Replace the figures with the attached.



1. The first part of the document discusses the importance of maintaining accurate records of all transactions. This is essential for ensuring the integrity of the financial statements and for providing a clear audit trail. The records should be kept up-to-date and should be easily accessible to all relevant parties.

2. The second part of the document outlines the procedures for handling any discrepancies or errors that may arise. It is important to identify the cause of the error and to take appropriate steps to correct it. This may involve reviewing the original records and consulting with the relevant staff members.

3. The third part of the document discusses the importance of regular communication and reporting. This is essential for ensuring that all relevant parties are kept up-to-date on the progress of the project and for identifying any potential issues or risks. Regular reports should be prepared and distributed to all relevant parties.

4. The fourth part of the document discusses the importance of maintaining a high level of transparency and accountability. This is essential for ensuring that all transactions are properly recorded and that all relevant parties are kept up-to-date on the progress of the project. Regular reports should be prepared and distributed to all relevant parties.

5. The fifth part of the document discusses the importance of maintaining a high level of accuracy and reliability. This is essential for ensuring that all transactions are properly recorded and that all relevant parties are kept up-to-date on the progress of the project. Regular reports should be prepared and distributed to all relevant parties.

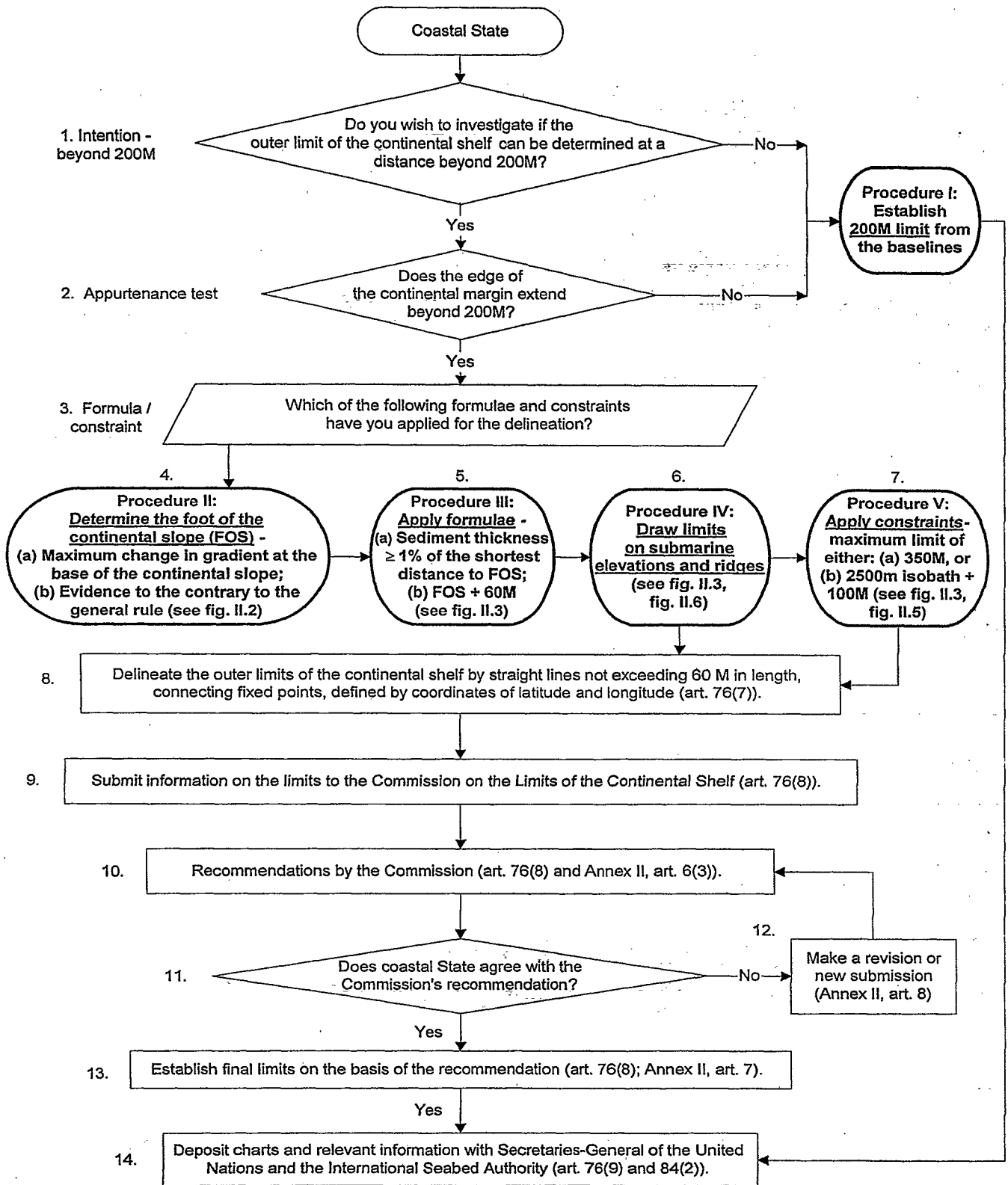


Figure II.1. Master Flowchart for the establishment of the outer limits of the continental shelf.

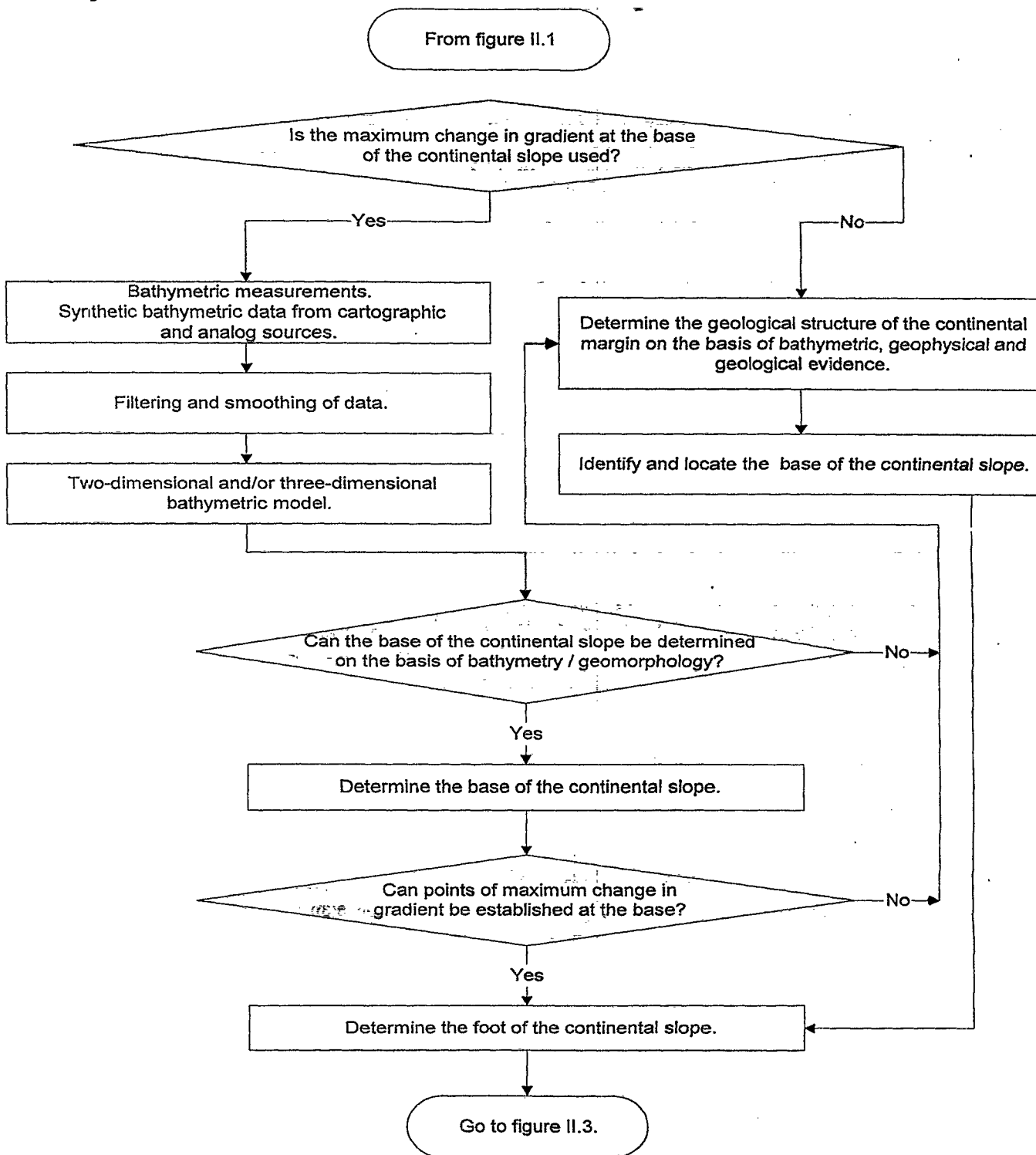


Figure II.2. Sub-flowchart showing the determination of the foot of the continental slope - indicated on Master Flowchart (fig. II.1) as procedure II.