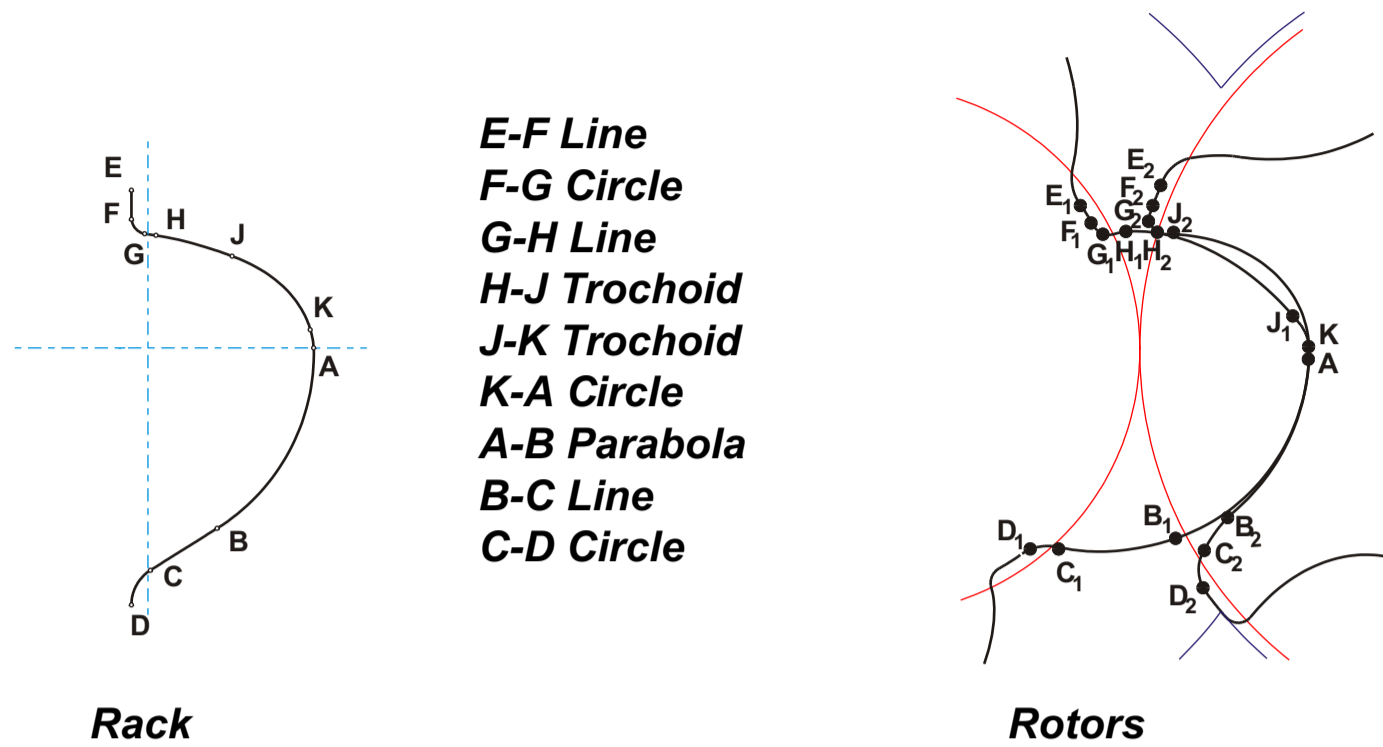
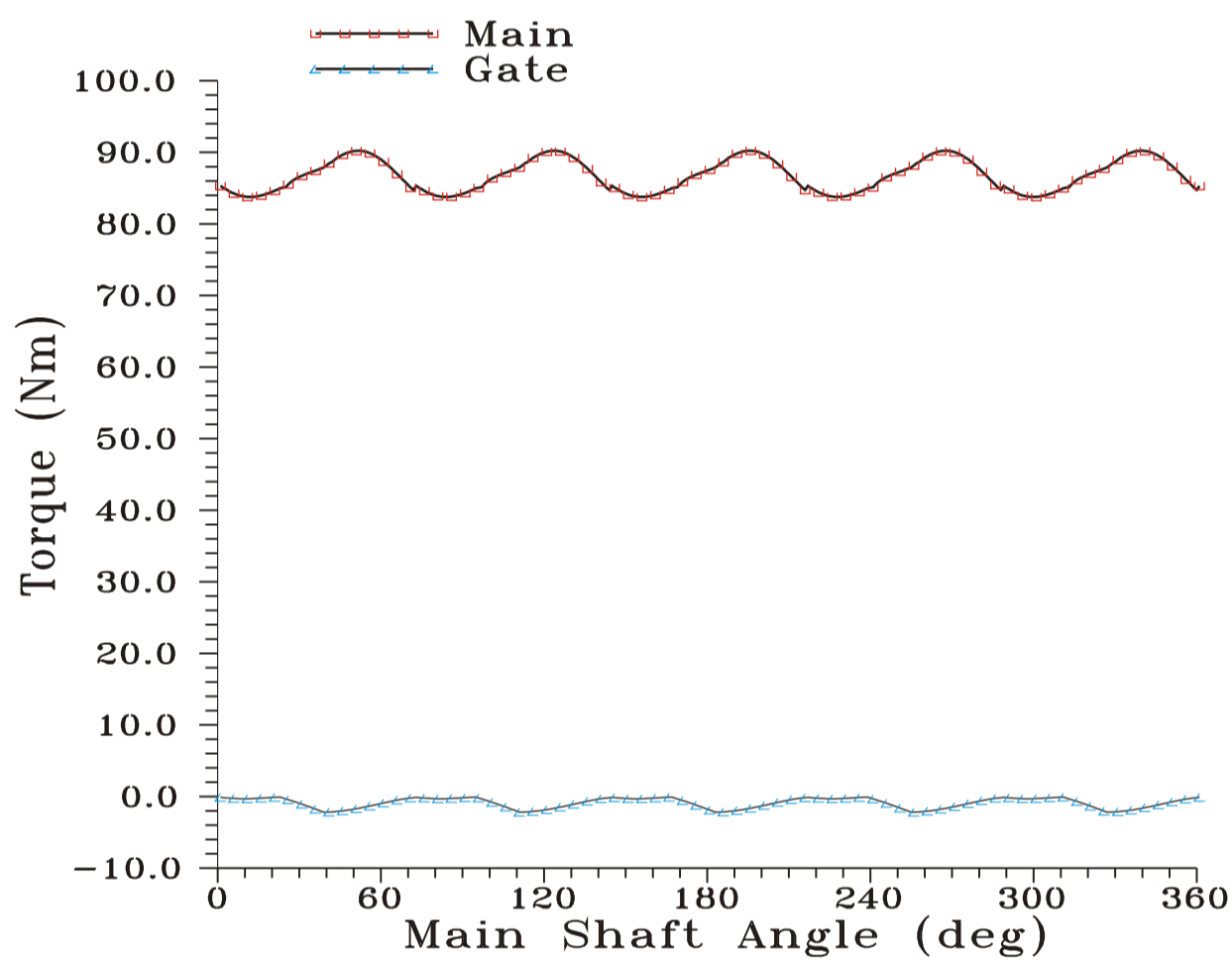


WATER INJECTED COMPRESSOR

Low rotor contact force and low contact stress between the rotors are unique features of 'N' Rack generated screw compressor rotors

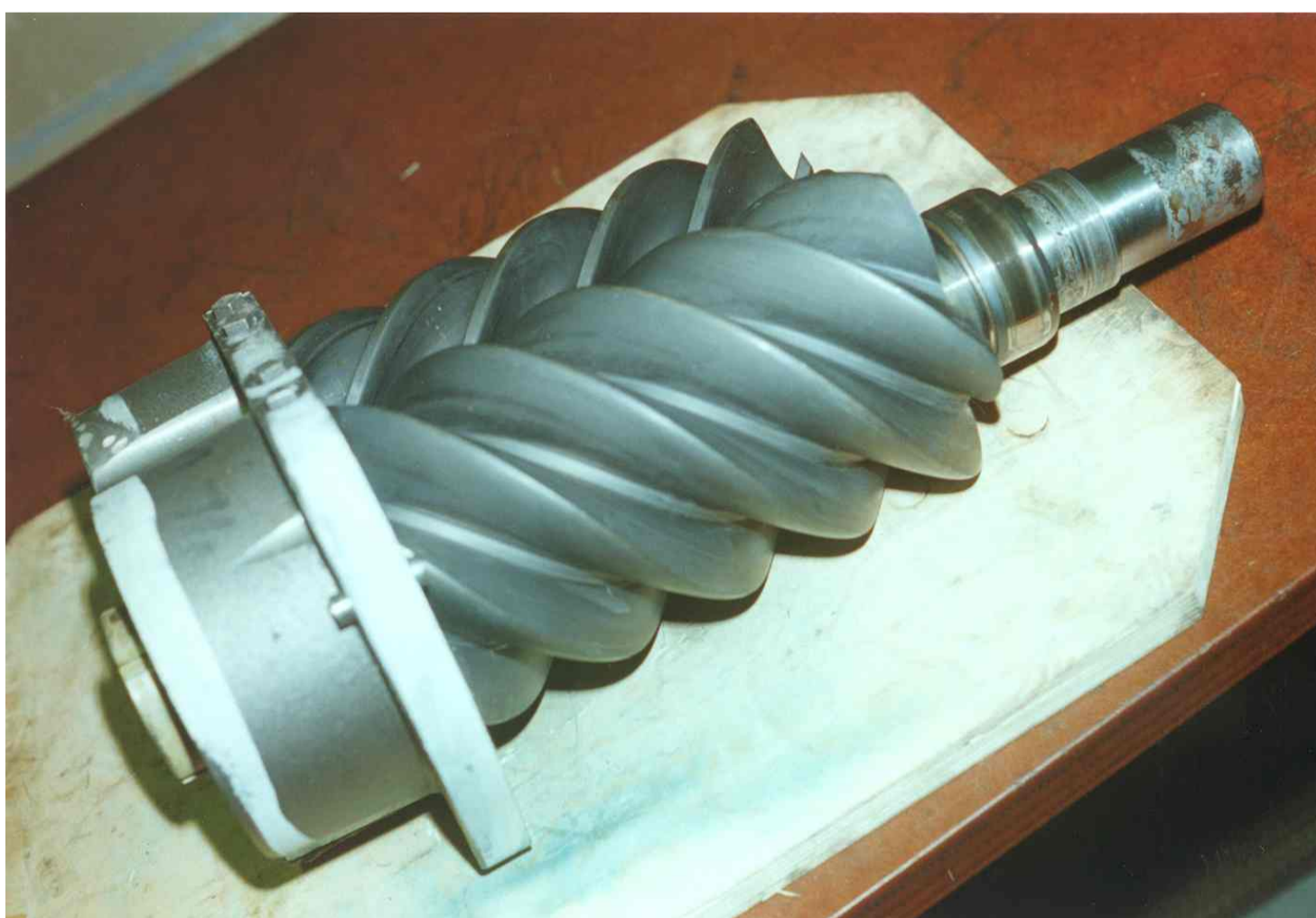


“N” Rack and Rotor Profile Key Points



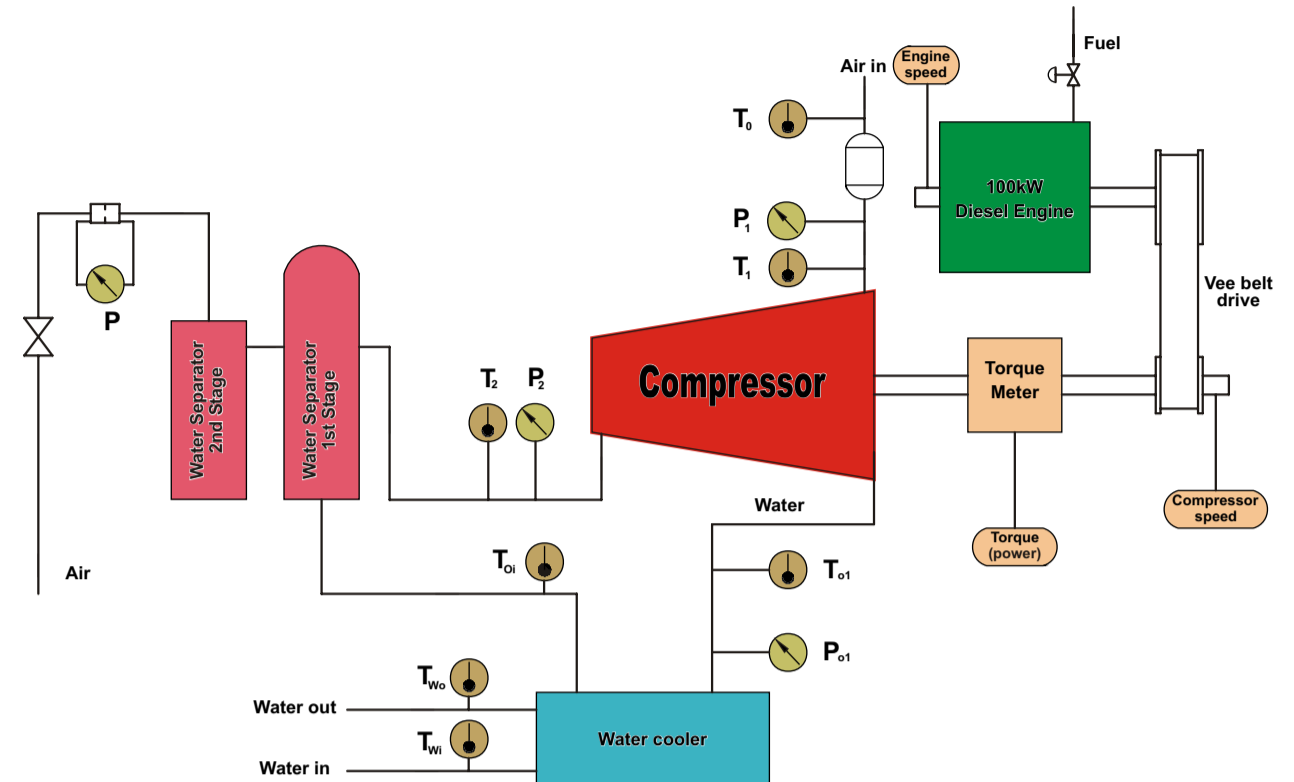
“Main and Gate Rotor Torque Distribution

Tests performed have confirmed that there was no performance deterioration over the operating period

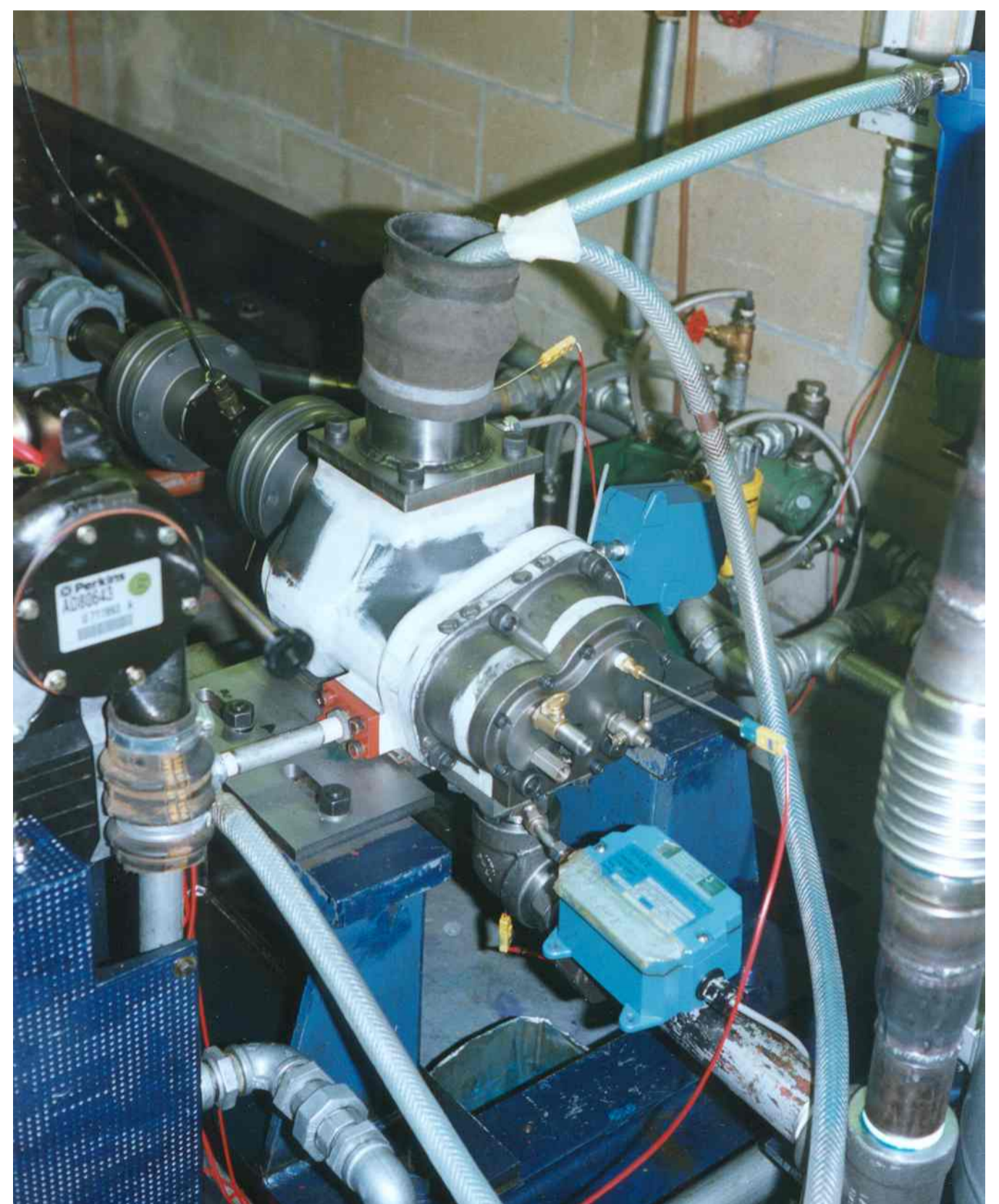


View of the Rotors after 150 Hours Running Time

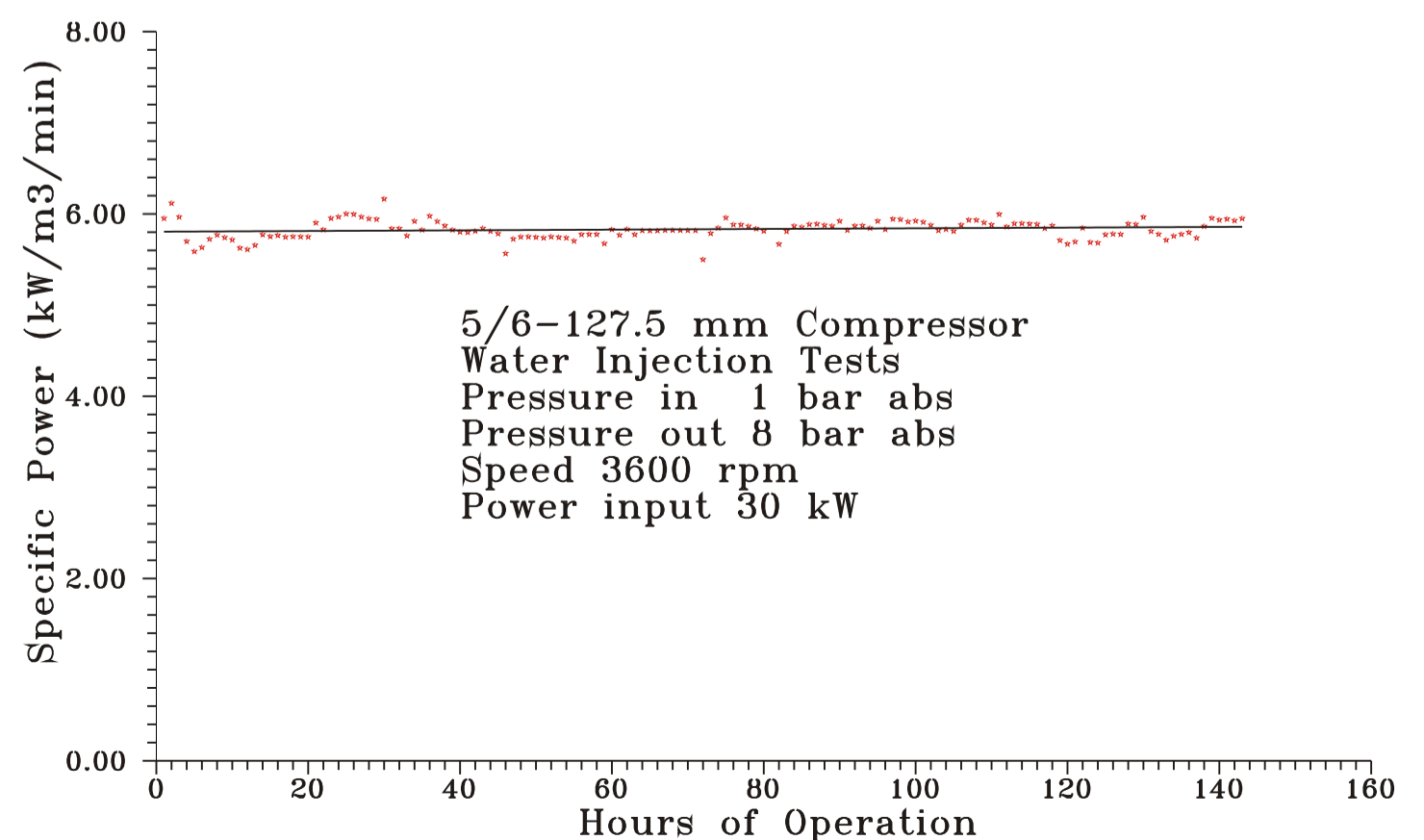
These and new developments in roller bearings enabled an oil flooded screw compressor to operate as a water flooded machine



Layout of the City University Compressor Test Rig



Water injected Screw Compressor



Variation of Specific Power over the Test Period