

Exercise code: DrE-2
Exercise type: Individual
Exercise title: Freehand Pictorial Sketching

Exercise Assignment:

Divide space of an A3 paper in 3 equally wide parts such that each of these is of the same height as the drawing page. In these spaces sketch in good proportion:

- 1) One perspective human eye view of an object shown in 2.1
- 2) Isometric view of an object given as 2.2 showing hidden lines
- 3) General oblique view of an object in figure 2.3

Exercise tips:

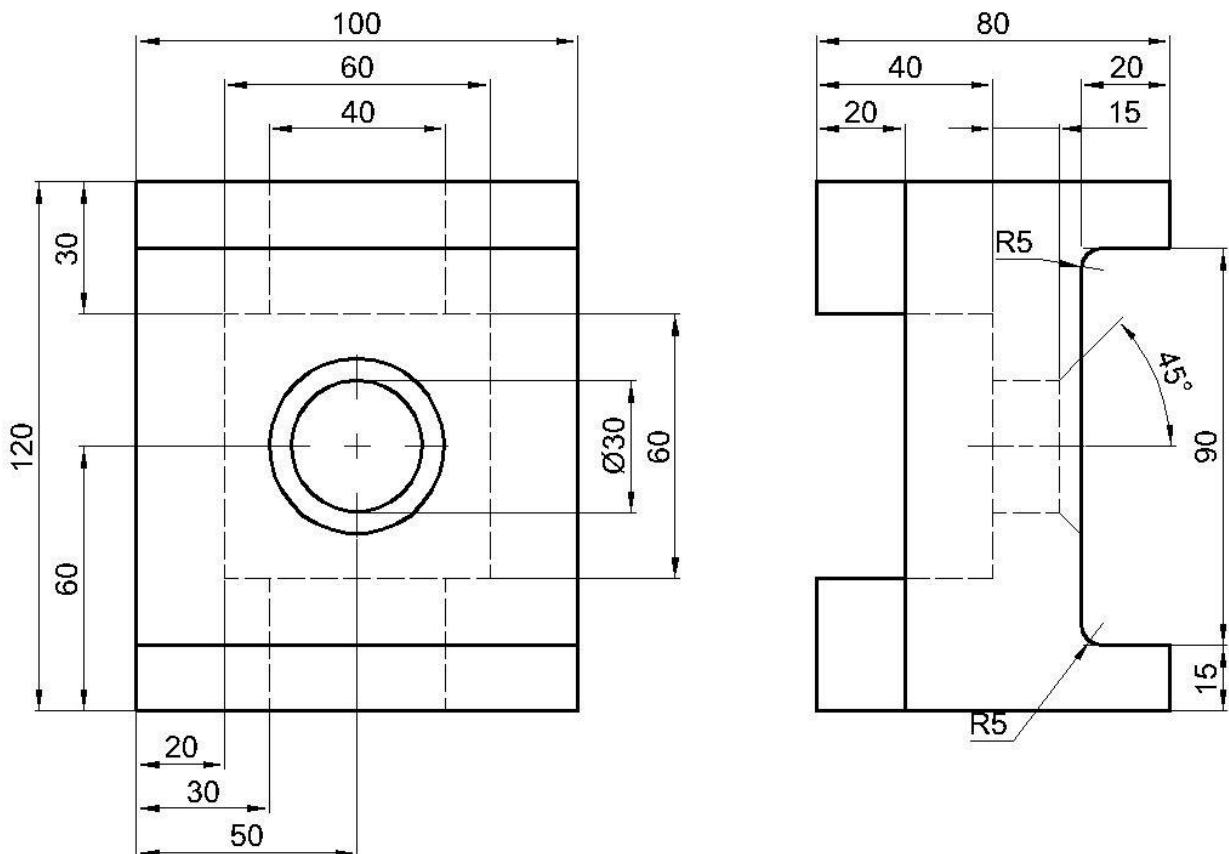
Always read exercise assignment carefully.

This is freehand sketching exercise. Only pencil and rubber are allowed.

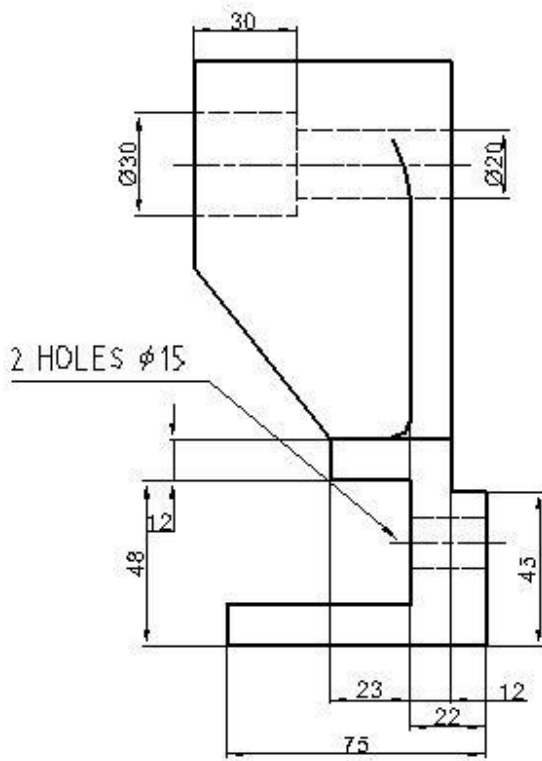
Arrange sketches neatly and ensure all letters and lines are made according to BS308.

Submit the exercise solution in A3 to U/G Mechanical & Aeronautical office, C108, in week 5
(check the deadline on web). Ensure that the name, group and other relevant data are filled in the title block

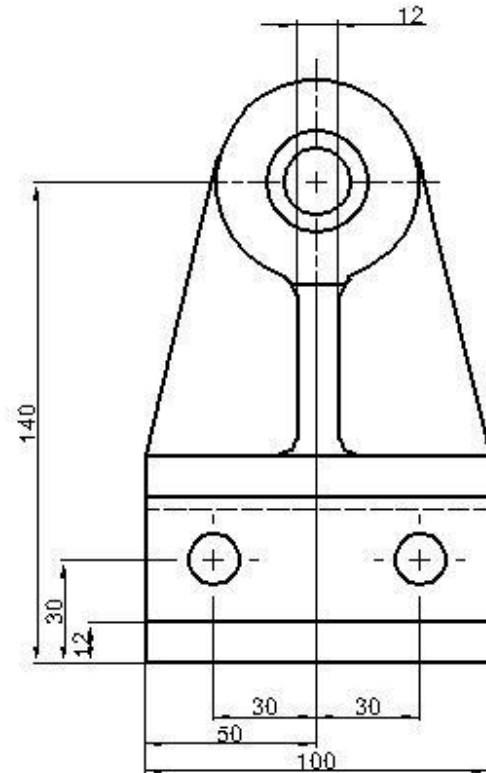
Exercise 2.1



Exercise 2.2



RIGHT SIDE VIEW



FRONT VIEW

Exercise 2.3

