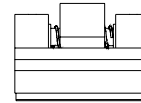
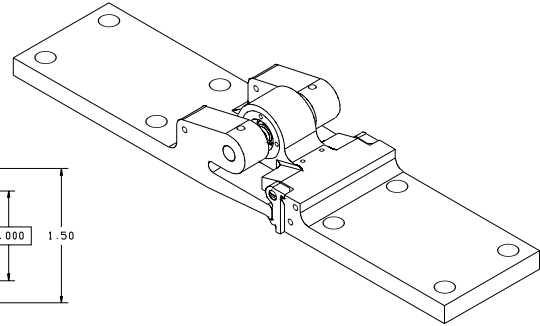
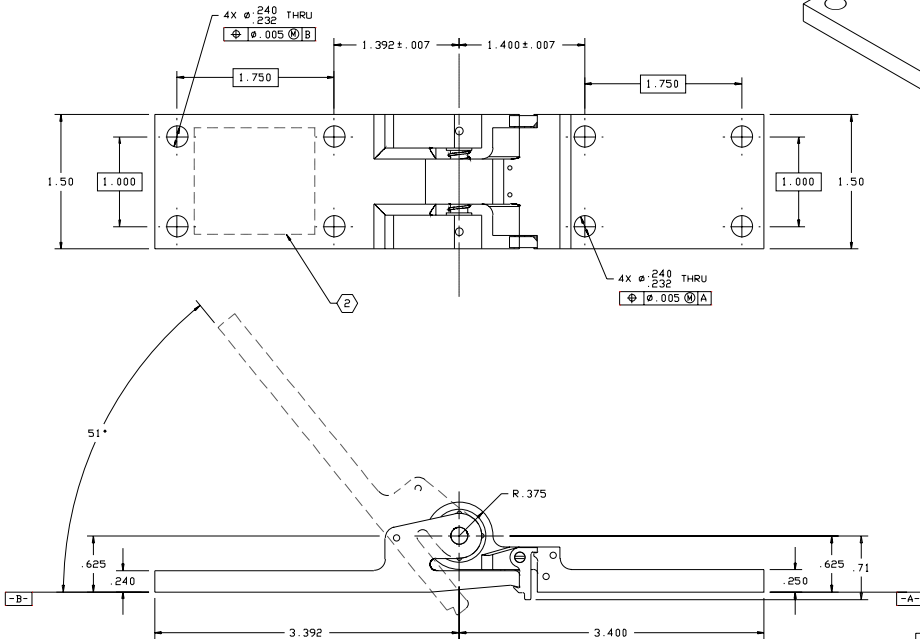


- NOTES:  
 1. PERFORMANCE TO BE IN ACCORDANCE WITH BALL AEROSPACE SOURCE CONTROL DRAWING 537069-501. MARK IN AREA INDICATED WITH THE FOLLOWING INFORMATION:  
 SRC IC-2001  
 SN XXX  
 BALL AEROSPACE  
 PN 537069-501  
 3. DIMENSIONS APPLY IN RESTRAINED CONDITION. (CENTERLINES OF MOUNTING PATTERNS HELD CO-PLANAR.)  
 4. HINGE SHOWN IN DEPLOYED, LATCHED CONDITION.

NOT CONTROLLED COPY:  
 Contact Starsys for current revision.

REVISIONS				
REV	DESCRIPTION	ECD #	DATE	APPROVED
	INITIAL RELEASE			



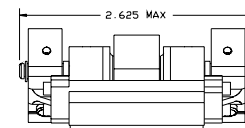
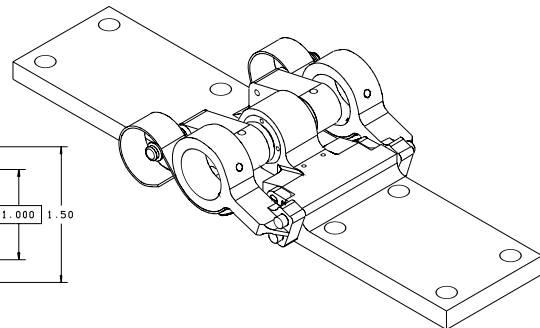
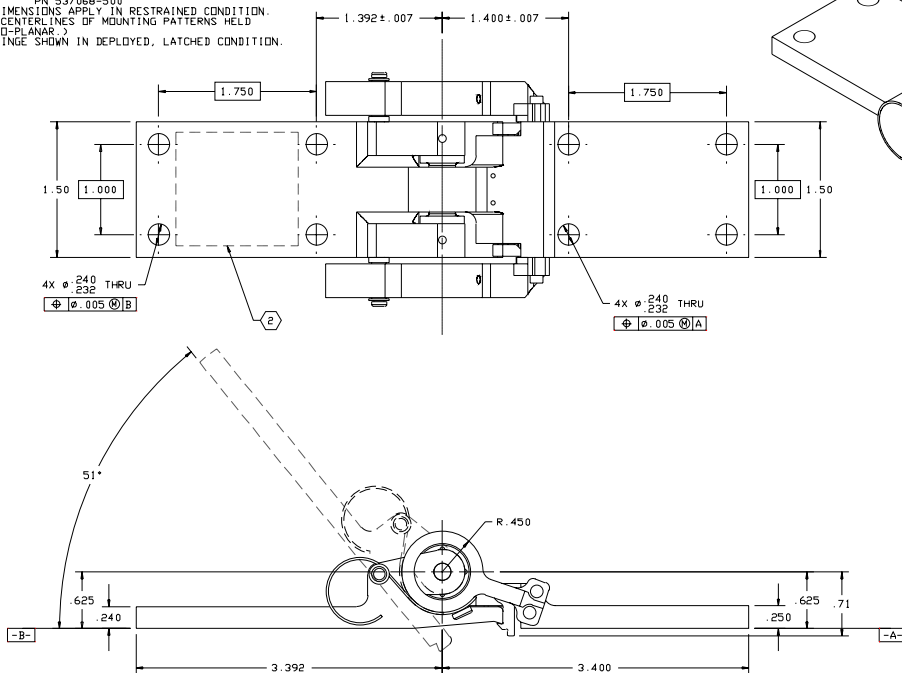
APPROVED	DATE	UNLESS OTHERWISE SPECIFIED	STARSYS RESEARCH		4909 MAULFUS CT. N. WASH. DC 20001
T L HASE	6/4/99	ALL DIMENSIONS ARE IN INCHES	ICESAT PASSIVE HINGE CONTROL DRAWING		4909 MAULFUS CT. N. WASH. DC 20001
ENGINEERING		FRACTIONAL DIMENSIONS SHALL BE IN 16ths UNLESS OTHERWISE SPECIFIED	MATERIAL		4909 MAULFUS CT. N. WASH. DC 20001
MANUFACTURING		DECIMAL DIMENSIONS SHALL BE TO 3 DECIMALS UNLESS OTHERWISE SPECIFIED	N/A		4909 MAULFUS CT. N. WASH. DC 20001
QUALITY ASSURANCE		MINIMUM HOLE DRILLING SHALL BE TO 3 DECIMALS UNLESS OTHERWISE SPECIFIED	SCALE		4909 MAULFUS CT. N. WASH. DC 20001
INTERPRET DRAWING PER ANSI Y14.2M-1992			1=1		4909 MAULFUS CT. N. WASH. DC 20001
			DO NOT SCALE THIS DRAWING		4909 MAULFUS CT. N. WASH. DC 20001
			B		4909 MAULFUS CT. N. WASH. DC 20001
			1 OF 1		4909 MAULFUS CT. N. WASH. DC 20001

12 AUG 99

- NOTES:  
 1. PERFORMANCE TO BE IN ACCORDANCE WITH BALL AEROSPACE SOURCE CONTROL DRAWING 537069-500. MARK IN AREA INDICATED WITH THE FOLLOWING INFORMATION:  
 SRC IC-2002  
 SN XXX  
 BALL AEROSPACE  
 PN 537069-500  
 3. DIMENSIONS APPLY IN RESTRAINED CONDITION. (CENTERLINES OF MOUNTING PATTERNS HELD CO-PLANAR.)  
 4. HINGE SHOWN IN DEPLOYED, LATCHED CONDITION.

NOT CONTROLLED COPY:  
 Contact Starsys for current revision.

REVISIONS				
REV	DESCRIPTION	ECD #	DATE	APPROVED
	INITIAL RELEASE			



APPROVED	DATE	UNLESS OTHERWISE SPECIFIED	STARSYS RESEARCH		4909 MAULFUS CT. N. WASH. DC 20001
T L HASE	6/4/99	ALL DIMENSIONS ARE IN INCHES	ICESAT POWERED HINGE CONTROL DRAWING		4909 MAULFUS CT. N. WASH. DC 20001
ENGINEERING		FRACTIONAL DIMENSIONS SHALL BE IN 16ths UNLESS OTHERWISE SPECIFIED	MATERIAL		4909 MAULFUS CT. N. WASH. DC 20001
MANUFACTURING		DECIMAL DIMENSIONS SHALL BE TO 3 DECIMALS UNLESS OTHERWISE SPECIFIED	N/A		4909 MAULFUS CT. N. WASH. DC 20001
QUALITY ASSURANCE		MINIMUM HOLE DRILLING SHALL BE TO 3 DECIMALS UNLESS OTHERWISE SPECIFIED	SCALE		4909 MAULFUS CT. N. WASH. DC 20001
INTERPRET DRAWING PER ANSI Y14.2M-1992			1=1		4909 MAULFUS CT. N. WASH. DC 20001
			DO NOT SCALE THIS DRAWING		4909 MAULFUS CT. N. WASH. DC 20001
			B		4909 MAULFUS CT. N. WASH. DC 20001
			1 OF 1		4909 MAULFUS CT. N. WASH. DC 20001

12 AUG 99