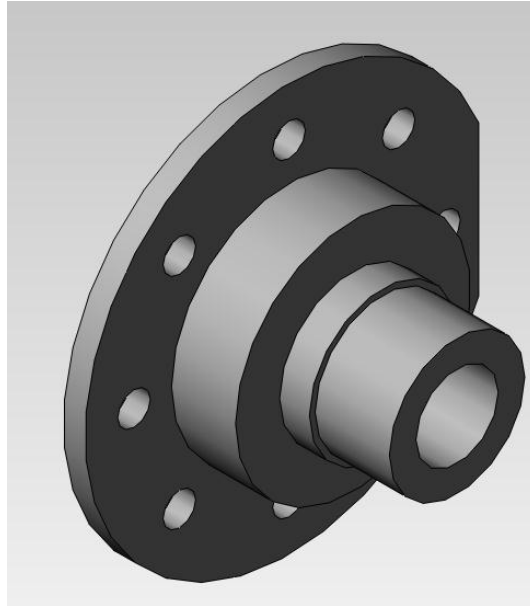


SolidWorks 2011-2012 – Coursework

Exercise 1.

Sketching profiles and creating a solid part using Revolved

Use the Part Design application to create a solid model of the part shown below. The part should be constructed by revolving a sketch of its cross sectional geometry.



Hints:

Create a sketch of the cross section of the bearing. You will need to create an axis entity to represent the axis of revolution to be used when the solid part is created. The bolt holes can be generated as a circular array of hole entities. You will find the following functions useful:

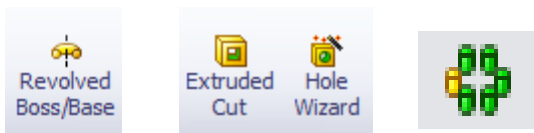
Sketching

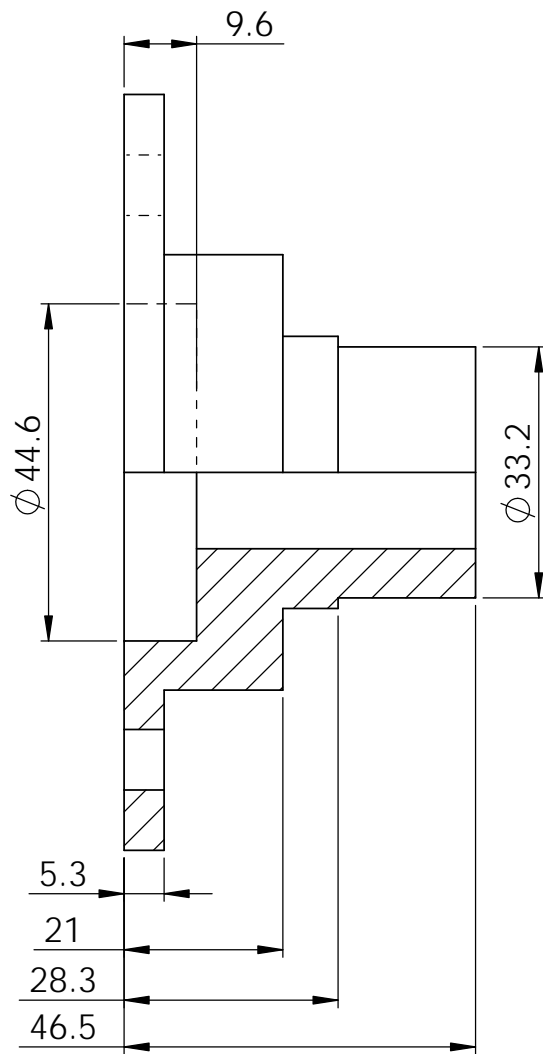
Sketch Tool, Line Tool, Circle Tool and Smart Dimension Tool



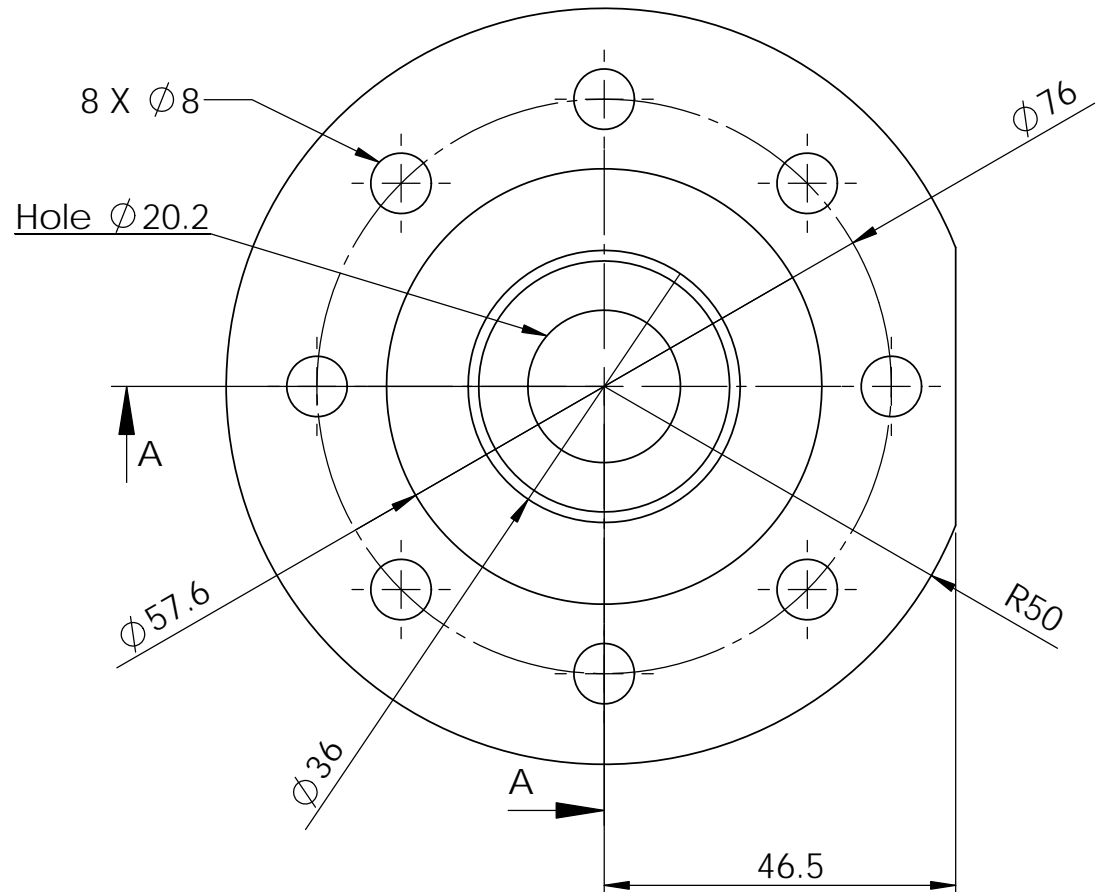
Part Design

Revolved Tool, Extruded Tool, Hole Wizard and Circular Pattern Tool





SECTION A-A
SCALE 1 : 1



	NAME	SIGNATURE	DATE			
DRAWN						
CHK'D						
APPV'D						
MFG						
Q.A						

TITLE:

Bearing Exercise

UNLESS OTHERWISE SPECIFIED:
DIMENSIONS ARE IN MILLIMETERS

A4

WEIGHT:

SCALE:1:1

SHEET 1 OF 1