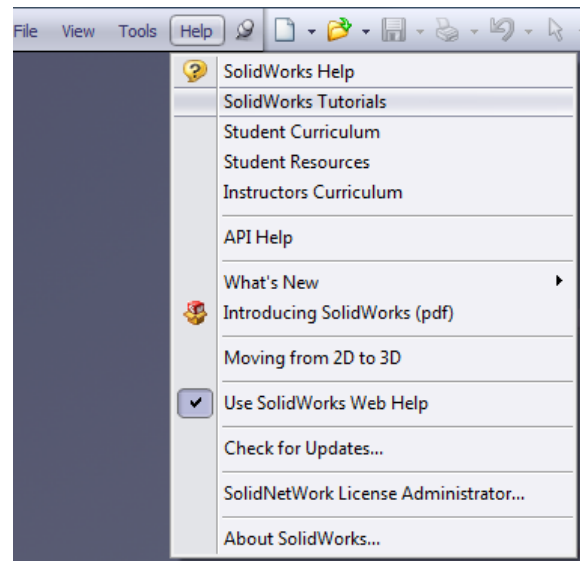
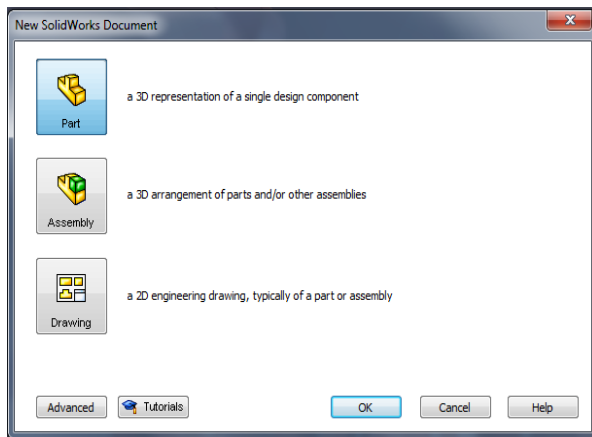


SolidWorks Tutorials

Tutorials can be access either from the new document dialog box or from the help menu



To start with Part modelling, choose “Getting Started” and select “lesson 1-Parts”. This exercise will take about 30 to 40 minutes to complete.

Lesson 2 deals with “assemblies” and can be completed between 45 to 60 minutes.

Lesson 3 deals with “drawings” and takes about 20 minutes to be completed.

More advanced tutorial are available “all SolidWorks Tutorial (set 1) and (set 2)”.

Beginners tutorials

Advanced tutorial

Tutorials by Category	
Getting Started	Special Types of Models
Building Models	Productivity Enhancements
Working with Models	Design Analysis
All SolidWorks Tutorials (Set 1)	
All SolidWorks Tutorials (Set 2)	